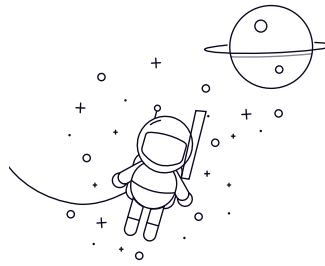


GAC..S



seleccionar Consulta	Bearing Number	Overall dimension [mm]										Rated load [kN]		Peso kg
		d	D	B	C	T	dk	S	A	rsr _{1s} max	a°	live load	Static load	
GAC25S	25	47	15	14	15	42	0.6	7.5	1	2.5	50	250	0.148	
GAC28S	28	52	15	15	16	47	1	8	1	2	60	300	0.186	
GAC30S	30	55	17	15	17	49.5	13	8.5	1	4.5	63	315	0.208	
GAC32S	32	58	17	16	17	52	2	8.5	1	2	71	354	0.241	
GAC35S	35	62	18	16	18	55.5	2.1	9	1	4	78	390	0.268	
GAC40S	40	68	19	17	19	62	2.8	9.5	1	3.5	92	463	0.327	
GAC45S	45	75	20	18	20	68.5	3.5	10	1	3	108	540	0.416	
GAC50S	50	80	20	19	20	74	43	10	1	1.5	123	618	0.455	
GAC55S	55	90	23	20	23	82	5	11.5	1.1	4	144	721	0.645	
GAC60S	60	95	23	21	23	88.5	5.7	11.5	1.1	2.5	163	817	0.714	
GAC65S	65	100	23	22	23	93.5	6.5	11.5	1.1	1	180	905	0.759	
GAC70S	70	110	25	23	25	102	7.2	12.5	1.1	2	206	1030	1.04	
GAC75S	75	115	25	24	25	107	7.9	12.5	1.1	1	220	1129	1.12	
GAC80S	80	125	29	25.5	29	115	8.6	14.5	1.1	3.5	258	1290	1.54	
GAC85S	85	130	29	26.5	29	122	9.4	14.5	1.1	2	284	1422	1.61	
GAC90S	90	140	32	28	32	128.5	10.1	16	1.5	3.5	316	1580	2.09	
GAC95S	95	145	32	29.5	32	135	10.8	16	1.5	2	350	1750	2.22	
GAC100S	100	150	32	31	32	141	11.6	16	1.5	0.5	384	1923	2.34	
GAC105S	105	160	35	32.5	35	148	12.3	17.5	2	2	423	2116	2.93	
GAC110S	110	170	38	34	38	155	13	19	2	3	463	2318	3.68	
GAC120S	120	180	38	37	38	168	14.5	19	2	0.5	547	2735	3.97	
GAC130S	130	200	45	43	45	188	18	19	2.5	1	710	3550	5.92	
GAC140S	140	210	45	43	45	198	19	19	2.5	1	740	3740	6.33	
GAC150S	150	225	48	46	48	211	20	20.5	3	1	850	4270	8.01	

GAC..S

GAC160S	160	240	51	49	51	225	20	22	3	1	970	4850	9.79
GAC170S	170	260	57	55	57	246	21	27	3	1	1190	5950	12.3
GAC180S	180	280	64	61	64	260	21	28	3	1	1395	6970	17.4
GAC190S	190	290	64	62	64	275	26	30	3	0.5	1500	7500	18.2
GAC200S	200	310	70	66	70	290	26	30	3	1.5	1680	8420	23.8