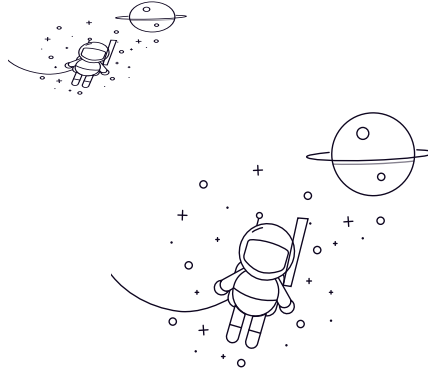


## Double-Row Angular Contact Ball Bearing (Si3N4)



seleccionar Consulta	Tojo Number	Dimentions (mm)					Mounting Dimentions (mm)			Ref. Weight (kg)
		d	D	B	r (min)	da min	Da max	ra max		
5313	65	140	58.74	2.1	77	128	2	1.58		
5213	65	120	38.1	1.5	74	111	1.5	0.68		
5312	60	130	54	2.1	72	118	2	1.29		
5212	60	110	36.5	1.5	69	101	1.5	0.55		
5311	55	120	49.2	2	65	110	2	0.94		
5211	55	100	33.3	1.5	64	91	1.5	0.39		
5310	50	110	44.4	2	60	100	2	0.8		
5209	45	85	30.2	1.1	52	78	1	0.25		
5309	45	100	39.7	1.5	54	91	1.5	0.57		
5210	50	90	30.2	1.1	57	83	1	0.27		
5308	40	90	36.5	1.5	49	81	1.5	0.43		
5307	35	80	34.9	1.5	44	71	1.5	0.32		
5208	40	80	30.2	1.1	47	73	1	0.23		
5207	35	72	27	1.1	42	65	1	0.18		
5306	30	72	30.2	1.1	37	65	1	0.21		
5206	30	62	23.8	1	36	56	1	0.12		
5305	25	62	25.4	1.1	32	55	1	0.14		
5205	25	52	20.6	1	31	46	1	0.08		
5304	20	52	22.2	1.1	27	45	1	0.09		
5204	20	47	20.6	1	26	41	1	0.05		
5303	17	47	22.2	1	23	41	1	0.06		

### Double-Row Angular Contact Ball Bearing (Si3N4)

5302	15	42	19	1	21	36	1	0.05
5203	17	40	17.5	0.6	22	35	0.6	0.04
5201	12	32	15.9	0.6	17	27	0.6	0.02
5202	15	35	15.9	0.6	20	30	0.6	0.03
5200	10	30	14.3	0.6	15	25	0.6	0.02