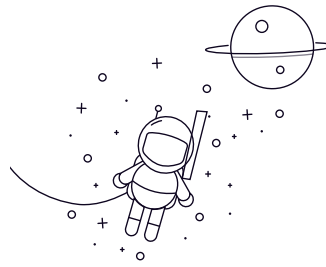
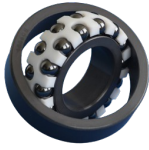


Self-aligning Ball Bearing (Si3N4)



seleccionar Consulta	Tojo Number	Dimentions (mm)				Mounting Dimentions (mm)			Ref. Weight (kg)
		d	D	B	r(min)	da min	Da max	ra max	
2200	10	30	14	0.6	14	26	0.6	0.019	
1200	10	30	9	0.6	14	26	0.6	0.014	
129	9	26	8	0.6	13	22	0.6	0.009	
108	8	22	7	0.3	10	20	0.3	0.006	
127	7	22	7	0.3	9	20	0.3	0.006	
126	6	19	6	0.3	8	17	0.3	0.004	
135	5	19	6	0.3	7	17	0.3	0.004	
1300	10	25	11	0.6	14	31	0.6	0.024	
2300	10	25	17	0.6	14	31	0.6	0.035	
1201	12	32	10	0.6	16	28	0.6	0.016	
2201	12	32	14	0.6	16	28	0.6	0.022	
1301	12	37	12	1	17	32	1	0.027	
2301	12	37	17	1	17	32	1	0.039	
1202	15	35	11	0.6	19	31	0.6	0.02	
2202	15	35	14	0.6	19	31	0.6	0.025	
1302	15	42	13	1	20	37	1	0.039	
2302	15	42	17	1	20	37	1	0.047	
1203	17	40	12	0.6	21	36	0.6	0.03	
2203	17	40	16	0.6	21	36	0.6	0.036	
1303	17	47	14	1	22	42	1	0.053	
2303	17	47	19	1	22	42	1	0.065	

Self-aligning Ball Bearing (Si3N4)

1204	20	47	14	1	25	42	1	0.049
2204	20	47	18	1	25	42	1	0.057
1304	20	52	15	1.1	26.5	45.5	1	0.067
1304	20	52	21	1.1	26.5	45.5	1	0.086
1205	25	52	15	1	30	47	1	0.058
2205	25	52	18	1	30	47	1	0.067
1305	25	62	17	1.1	31.5	55.5	1	0.11
2305	25	62	24	1.1	31.5	55.5	1	0.14
1206	30	62	16	1	35	57	1	0.09