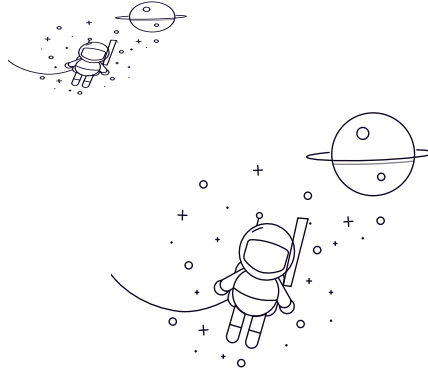


Angular Contact Ball Bearing (SSiC)



seleccionar Consulta	Tojo Number	Dimentions (mm)					Rodamientos HIY	Mounting Dimentions (mm)		
		d	D	B	r (min)	r1 (min)	da min	Da max	ra max	
7900	10	22	6	0.3	0.15	12.5	19.5	0.3		
7000	10	26	8	0.3	0.15	12.5	23.5	0.3		
7200	10	30	9	0.6	0.3	15	25	0.6		
7300	10	35	11	0.6	0.3	15	30	0.6		
7901	12	24	6	0.3	0.15	14.5	21.5	0.3		
7001	12	28	8	0.3	0.15	14.5	25.5	0.3		
7201	12	32	10	0.6	0.3	17	27	0.6		
7301	12	37	12	1	0.6	18	31	1		
7902	15	28	7	0.3	0.15	17.5	25.5	0.3		
7002	15	32	9	0.3	0.15	17.5	29.5	0.3		
7202	15	35	11	0.6	0.3	20	30	0.3		
7302	15	42	13	1	0.6	21	36	1		
7903	17	30	7	0.3	0.15	19.5	27.5	0.3		
7003	17	35	10	0.3	0.15	19.5	32.5	0.3		
7203	17	40	12	0.6	0.3	22	35	0.6		
7303	17	47	14	1	0.6	23	41	1		
7904	20	37	9	0.3	0.15	22.5	34.5	0.3		
7004	20	42	12	0.6	0.3	25	37	0.6		
7204	20	47	14	1	0.6	26	41	1		
7304	20	52	15	1.1	0.6	27	45	1		
7905	25	42	9	0.3	0.15	27.5	39.5	0.3		

Angular Contact Ball Bearing (SSiC)

7005	25	47	12	0.6	0.3	30	42	0.6
7205	25	52	15	1	0.6	31	46	1
7305	25	62	17	1.1	0.6	32	55	1
7906	30	47	9	0.3	0.15	32.5	44.5	1
7006	30	55	13	1	0.6	36	49	1
7206	30	62	16	1	0.6	36	56	1
7306	30	72	19	1.1	0.6	37	65	1
7907	35	55	10	0.6	0.3	40	50	0.6
7007	35	62	14	1	0.6	41	56	1