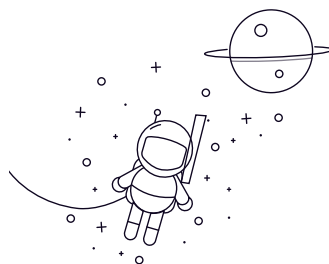


## Insert Ball Bearing (SSiC)



| seleccionar Consulta Tojo Number |     |     | Dimintions (mm) |      |     |     |     | r/min      | G ds |
|----------------------------------|-----|-----|-----------------|------|-----|-----|-----|------------|------|
|                                  |     |     | d               | D    | B   | S   | C   |            |      |
| UC201                            | 12  | 47  | 31              | 12.7 | 17  | 0.6 | 4.5 | M6 x 1     |      |
| UC202                            | 15  | 47  | 31              | 12.7 | 17  | 0.6 | 4.5 | M6 x 1     |      |
| UC203                            | 17  | 47  | 31              | 12.7 | 17  | 0.6 | 4.5 | M6 x 1     |      |
| UC204                            | 20  | 47  | 31              | 12.7 | 17  | 1   | 4.5 | M6 x 1     |      |
| UC205                            | 25  | 52  | 34.1            | 14.3 | 17V | 1   | 5   | M6 x 1     |      |
| UC206                            | 30  | 62  | 38.1            | 15.9 | 19  | 1   | 5   | M6 x 1     |      |
| UC207                            | 35  | 72  | 42.9            | 17.5 | 20  | 1.1 | 6   | M8 x 1     |      |
| UC208                            | 40  | 80  | 49.2            | 19   | 21  | 1.1 | 8   | M8 x 1     |      |
| UC209                            | 45  | 85  | 49.2            | 19   | 22  | 1.1 | 8   | M8 x 1     |      |
| UC210                            | 50  | 90  | 51.6            | 19   | 24  | 1.1 | 9   | M10 x 1    |      |
| UC211                            | 55  | 100 | 55.6            | 22.2 | 25  | 1.5 | 9   | M10 x 1    |      |
| UC212                            | 60  | 110 | 65.1            | 25.4 | 27  | 1.5 | 10  | M10 x 1    |      |
| UC213                            | 65  | 120 | 65.1            | 25.4 | 27  | 1.5 | 10  | M10 x 1    |      |
| UC214                            | 70  | 125 | 74.6            | 30.2 | 29  | 1.5 | 12  | M12 x 1.25 |      |
| UC215                            | 75  | 130 | 77.8            | 33.3 | 30  | 1.5 | 12  | M12 x 1.25 |      |
| UC216                            | 80  | 140 | 82.6            | 33.3 | 33  | 2   | 14  | M12 x 1.25 |      |
| UC217                            | 85  | 150 | 85.7            | 34.1 | 36  | 2   | 14  | M12 x 1.25 |      |
| UC218                            | 90  | 160 | 96              | 39.7 | 37  | 2   | 14  | M12 x 1.25 |      |
| UC220                            | 100 | 180 | 108             | 42   | 41  | 2   | 14  | M12 x 1.25 |      |