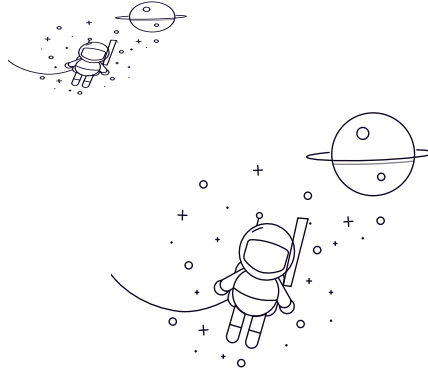
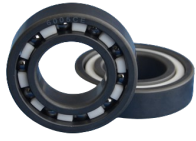


## Deep Groove Ball Bearing (SSiC)



seleccionar Consulta		Open Bearing Tojo Number	Dimentions (mm)				Mounting Dimentions (mm)		
			Bore d	O.D D	Width B	chamfer r (min)	da min	da max	Da ra max max
6314	70	150	35	2.1	81	92	139	2	
6214	70	125	24	1.5	78	84	117	1.5	
6014	70	110	20	1.1	76.5	80.5	103.5	1	
16014	70	110	13	0.6	74	/	106	0.6	
6914	70	100	16	1	75	77.5	95	1	
6814	70	90	10	0.6	74	74.5	86	0.6	
6313	65	140	33	2.1	76	85.5	129	2	
6213	65	120	23	1.5	73	80	112	1.5	
6013	65	100	18	1.1	71.5	73	93.5	1	
16013	65	100	11	0.6	69	/	96	0.6	
6913	65	90	13	1	70	71.5	85	1	
6813	65	85	10	0.6	69	69	81	0.6	
6412	60	150	35	2.1	71		139	2	
6312	60	130	31	2.1	71	79	119	2	
6212	60	110	22	1.5	68	74.5	102	1.5	
6012	60	95	18	1.1	66.5	69	88.5	1	
16012	60	95	11	0.6	64	/	91	0.6	
6912	60	85	13	1	65	66	80	1	
6812	60	78	10	0.3	62	64	76	0.3	
6411	55	140	33	2.1	66	/	129	2	
6311	55	120	29	2	64	72.5	111	2	

Deep Groove Ball Bearing (SSiC)

6211	55	100	21	1.5	63	66.5	92	1.5
6011	55	90	18	1.1	61.5	64	83.5	1
16011	55	90	11	0.6	59	/	86	0.6
6911	55	80	13	1	60	61.5	75	1
6811	55	72	9	0.3	57	59	70	0.3
6410	50	130	31	2.1	61	/	119	2
6310	50	110	27	2	59	68	101	2
6210	50	90	20	1.1	56.5	60	83.2	1
6010	50	80	16	1	55	58.5	75	1